

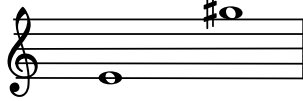
G.F.Händel: "Un momento di contento"

dall'Opera "Alcina"(1735)

Edited by Francesco Marco Algeri

"Un momento di contento
dolce rende a un fido amante
tutto il pianto che versò.
Suol' amore dal dolore
tirar balsamo alle pene
e sanar chi pria piagò."

Original key



Andante allegro

Oronte

Piano

7

8

12

8

Un mo - men-to di con - ten-to dol - ce

18
8

ren-de a un fi - do a - man - te tut - to il pian - to che ver - sò,

23
8

un mo - men - to di con -

29
8

-ten - to dol - ce ren - de a un fi - do a -

33
8

-man - te tut - to il pian - to che ver - sò,

37
8
tut-to il pian - to che ver - sò, tut - to il pian -

42
8
- - - to che ver - sò, dol - ce

46
8
ren - de a un fi-do a - man - - - te

51
8
tut - to il pian - to che ver - sò.

Fine

58
8

Suol' a - mo - re — dal do - lo - re ti - rar bal - sa - mo al - le

3

Detailed description: This system contains measures 58 through 63. It features a vocal line in the upper staff and a piano accompaniment in the lower staff. The key signature is three sharps (F#, C#, G#). The vocal line begins with a whole rest for two measures, followed by a melodic phrase. A triplet of eighth notes is marked with a '3' above it. The piano accompaniment provides harmonic support with chords and moving lines in both hands.

64
8

pe - ne e - sa - nar chi pri - a pia - gò, e sa - nar,

Detailed description: This system contains measures 64 through 68. The vocal line continues with a melodic phrase, including a dotted quarter note and an eighth note. The piano accompaniment features a rhythmic pattern of eighth notes in the right hand and quarter notes in the left hand.

69
8

e sa - nar — chi pri a pia -

Detailed description: This system contains measures 69 through 73. The vocal line has a whole rest for two measures before the melody resumes. The piano accompaniment continues with its rhythmic accompaniment, featuring eighth notes and quarter notes.

D.S. ‰ al Fine

74
8

-gò. Un mo-

7 7

Detailed description: This system contains measures 74 through 78. The vocal line has a whole rest for two measures, then a dotted quarter note followed by an eighth note. The piano accompaniment features a rhythmic pattern of eighth notes in the right hand and quarter notes in the left hand. The system ends with a double bar line.