

$\frac{1}{3}$  Scena Prima

= Atto Terzo =

Mit: Euristo  
e Palmide

Mit:

Non sperate placarmi; i torti miei perdonar gli saprei,

ma non quei d'Emirena. vada pur quel malvagio alla sua pena. Dunque... dunque morra; non quanto io

Eur. Mit: Eur.

feci la salvezza di lei.... Son grato, e penso alla mercè, ma l'inumano.... Ah sire,

Mit: Pal:

miuna mercè lo veggio, senza l'amato padre esser può cara, a quel tenero giuro. / La

mea premura in lui distasse amore. / già deciso, non più! misero! ah questa

Mit: Eur:

= Parte = Pal.

Mit:

no mi aspettava oh Dio merca funesta. *povero prence!* Ecco il mio ben: mi lascia con lei pal:

Pal.

Mit:

Pal:

ride. *Di il caro prence... il prence no avra da lagnarsi. ah vance.../oh Dio! senza di*

Scena II: <sup>da</sup>

Emi:

Lui mi lagnarò ben io. *Detto* pur mi concede il fato, mitridate adò:

Mit:

vato, un dolce, un caro, un felice momento di stringerz al mio sen senza spavento. non

Emi:

Sempre il ciel mia vita favorisce i malvagi i giusti opprime, ed attalo il vedrai. Vo che il crudele,

mit:

Emi:

Optia a nemesi fia. Si di quel mostro deesi purgar la terra. Ingiusto e offai: ma se i me lo

fai, signor s metti, ch'io bilanciar ti faccia, la crudelta di padre colla virtu d figlio. ah senza

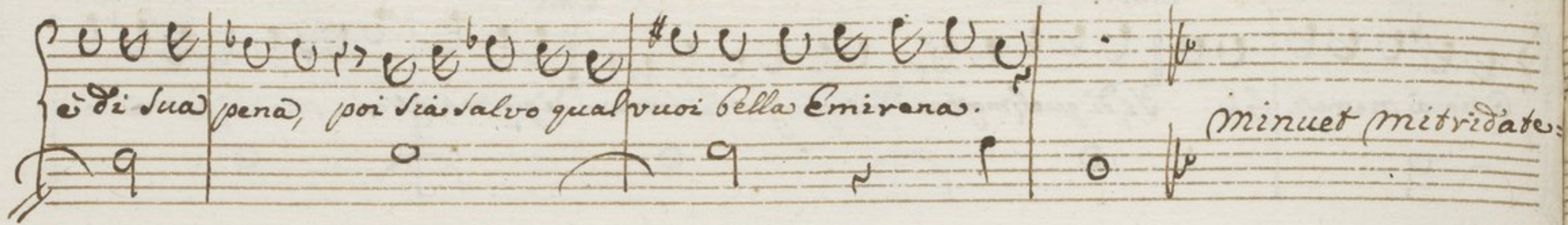
questi, morto mi piangeresti. io l'incontrai che mi fece pietai. Corri mi disse grave di pranto il

mit:

figlio, e salvo il padre, a un venturato figlio. ah se puoi.... che non posso a tuo favor ben

mio? viva il tiranno ma di Nemesi al tempio, e vi comprenda appieno, pria l'error di sua colpa,

*Di sua pena, poi sia salvo qual vuoi bella Emirena.* *minuet mitridate.*



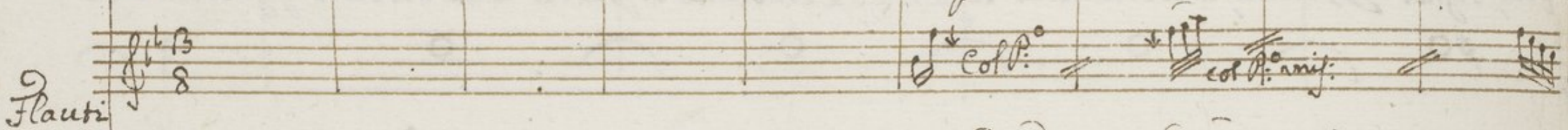
A vocal line on a single staff with lyrics written below the notes. The lyrics are "Di sua pena, poi sia salvo qual vuoi bella Emirena." followed by "minuet mitridate." on the right. The music consists of a series of notes, some with slurs and accents.

Corni  
Betta

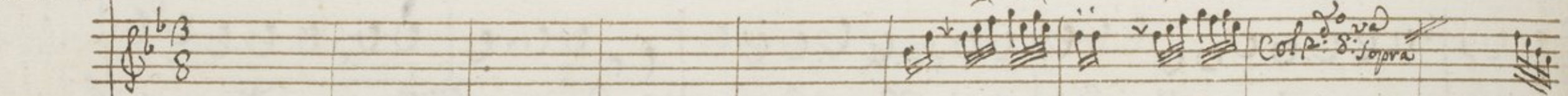


Two staves of musical notation. The top staff is labeled "Corni" and the bottom staff is labeled "Betta". Both staves have a treble clef, a key signature of one flat (B-flat), and a time signature of 8. The notation includes various rhythmic values and articulation marks.

Flauti



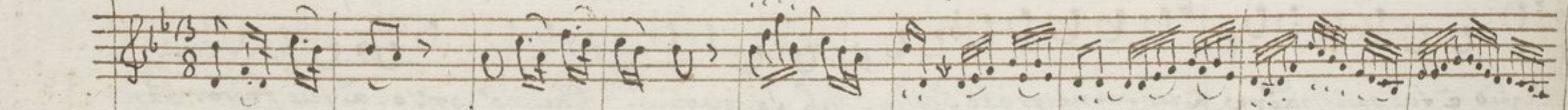
A staff of musical notation labeled "Flauti". It has a treble clef, a key signature of one flat (B-flat), and a time signature of 8. The notation includes various rhythmic values and articulation marks.



A continuation of the musical notation for the Flauti part, showing more complex rhythmic patterns and articulation.

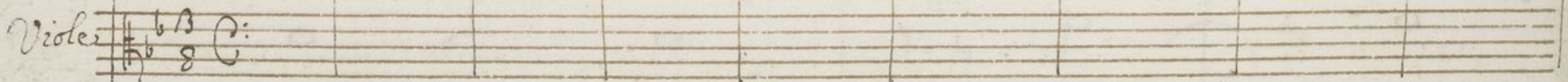


A continuation of the musical notation for the Flauti part, featuring dense rhythmic textures and dynamic markings like *f* and *pp*.



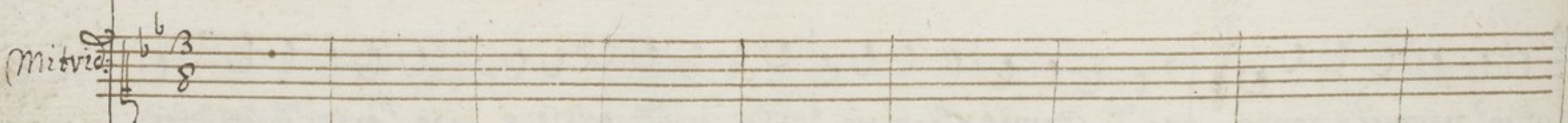
A continuation of the musical notation for the Flauti part, showing intricate rhythmic patterns.

Viola



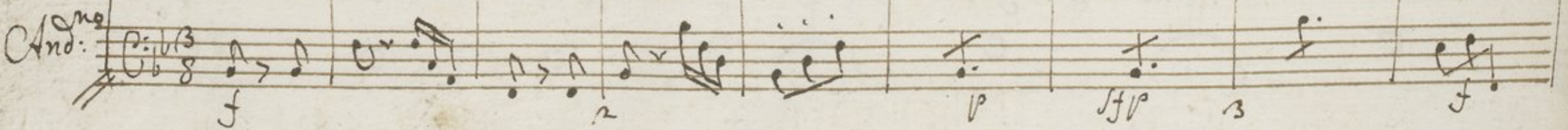
A staff of musical notation labeled "Viola". It has a treble clef, a key signature of one flat (B-flat), and a time signature of 8. The notation includes various rhythmic values and articulation marks.

Mitridate



A staff of musical notation labeled "Mitridate". It has a treble clef, a key signature of one flat (B-flat), and a time signature of 8. The notation includes various rhythmic values and articulation marks.

And.  
And.



A staff of musical notation labeled "And." with a tempo marking "And." above it. It has a treble clef, a key signature of one flat (B-flat), and a time signature of 8. The notation includes various rhythmic values and articulation marks.

Leggiadre stelle del Ciel d'amore  
 voi siete quelle che a questo core date è to-

4 *U* 5 *f* *ff* 6 *p*

Con *rit.*

*glie* la libertà      Se a me giva = te      Liete e tranquile      Le sicure siete vaghupu

*8va sopra*

*pille, che l'alma amante, v'obbedi = va* : Leggiadre Stelle del ciel da =

10

11

f

12 p

= more d'ciel d'amore voi siete quelle ch'è questo core Date e togliete la liber tai la liber

13 14 15





Handwritten musical notation on two staves. The notation includes various note values, rests, and dynamic markings such as accents (>) and slurs. The music is organized into measures by vertical bar lines.

Handwritten musical notation on two staves. The top staff features dense, rapid passages of notes, possibly sixteenth or thirty-second notes. The bottom staff contains fewer notes, including some with stems and flags. There are dynamic markings like *p* and *16,* and a measure number *17* written below the staff.

Handwritten musical score on aged paper, featuring multiple staves. The score includes vocal lines and piano accompaniment. The lyrics are written below the vocal line.

**Lyrics:**  
Lai li = bertai  
leggiadre stelle  
del ciel d'amore

**Performance markings:**  
Cof. P. mij: // U > > P. mij: // U > >  
Cof. P. 8. <sup>va</sup> Sopra // U > > P. 8. <sup>va</sup> // U > >  
f p f p  
18 f 19 p

Handwritten musical score for piano accompaniment, consisting of five staves. The notation includes various rhythmic values, rests, and dynamic markings such as *p* and *sf*. The music is written in a style characteristic of 18th or 19th-century manuscript notation.

Handwritten musical score with Italian lyrics. The lyrics are: "Del ciel d'amore voi siete quelle che a questo core date e togliete la liber-tai date e to="

The lyrics are written below the notes on a staff. The musical notation includes notes, rests, and dynamic markings such as *sf*, *p*, *no*, *ri*, *lc*, and *rr*.

*gliete*      *la Libertai*

23

29

Scena III:

Emi:

Mirena sola

Da una Torbida aurosa chi mai sperar potea si lieto becafo? ma no dovea zi

meno a un Oppressa virtu, a un oppressa virtu che undi sereno.

Cavat: Emirena

Cornio in F:

Flauti

Cond. Sopra

Violini

Viola

Emirena

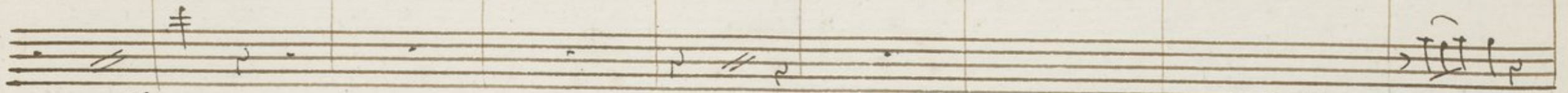
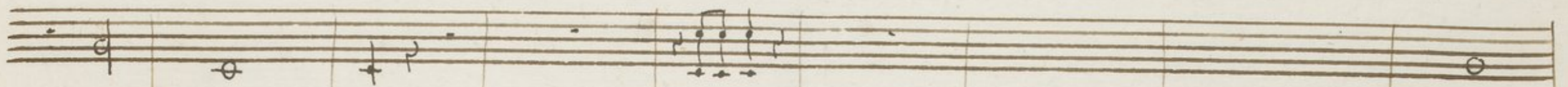
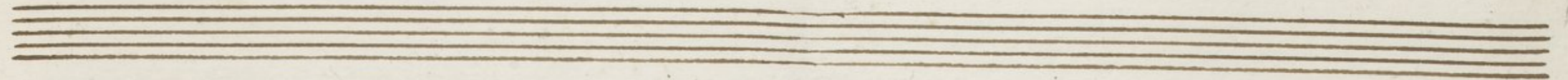
Violoncelli

Obno:

Handwritten musical notation on two staves. The top staff contains several measures of music with notes and rests. The bottom staff contains similar notation, including a measure with a fermata over a note.

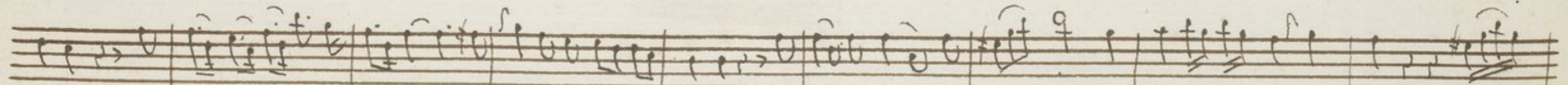
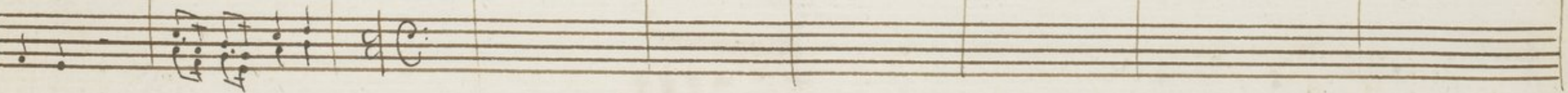
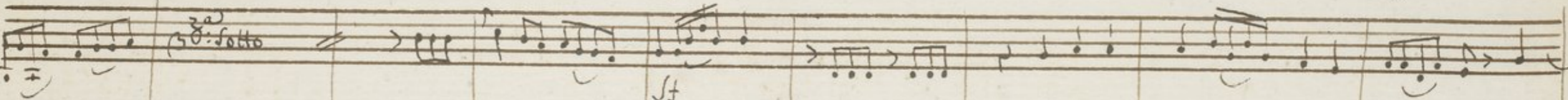
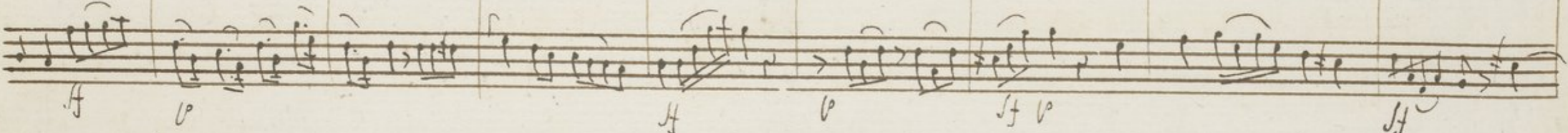
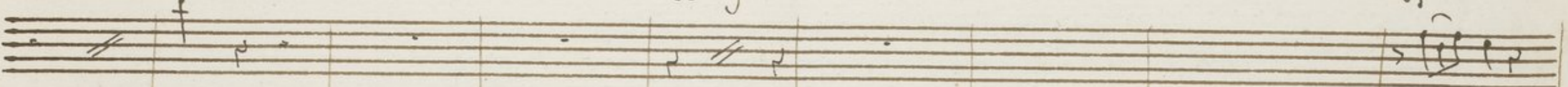
Handwritten musical notation on two staves. The top staff features a series of notes with slurs and accents. The bottom staff contains a section marked "3<sup>o</sup> lotto" with a double bar line, followed by more musical notation.

Handwritten musical notation on two staves. The top staff contains a section with the text "Supponi via procella e purboave a un" written below the notes. The bottom staff contains musical notation with notes and rests.

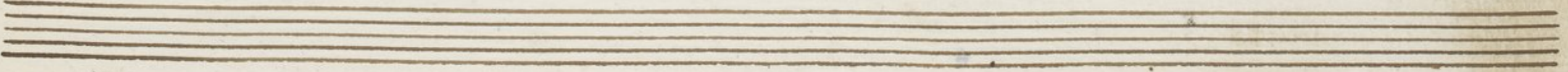
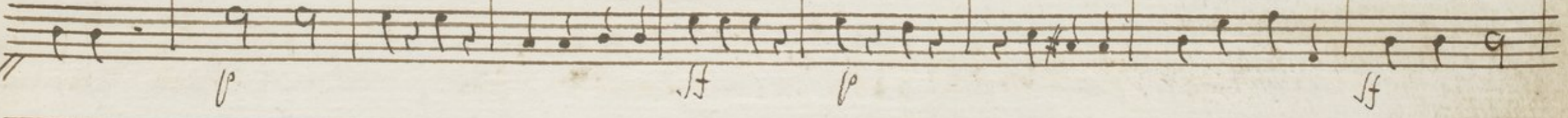


Contr. 8va

Finis:



alma è pur soave à un al = ma Doppo si via procella goder la dolce calma in seno al caro ben go -

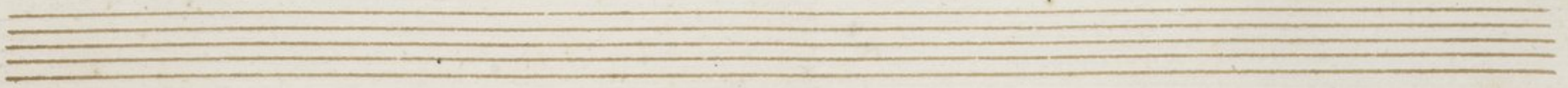


Handwritten musical score for the first system, consisting of five staves. The top two staves are empty. The third staff contains a vocal line with lyrics. The fourth and fifth staves contain piano accompaniment. Dynamics include 'f' and 'p'.

Handwritten musical score for the second system, consisting of five staves. The top two staves are empty. The third staff contains a vocal line with lyrics. The fourth and fifth staves contain piano accompaniment. Dynamics include 'f' and 'p'.

Der lui dolce calma in seno al caro ben - in se - noal caro ben Doppo si via procellas e,





Handwritten musical notation on two staves. The upper staff contains several notes, including a half note and a quarter note. The lower staff contains a double bar line and some faint markings.

*ma 8. RR*

Handwritten musical notation on two staves. The upper staff contains a double bar line and a few notes. The lower staff contains a double bar line and a few notes.

Handwritten musical notation on a single staff. It features a series of notes with slurs and accents, including a half note and several quarter notes.

*f*

*p*

Handwritten musical notation on a single staff. It features a series of notes with slurs and accents, including a half note and several quarter notes.

*Ad. Sotto*

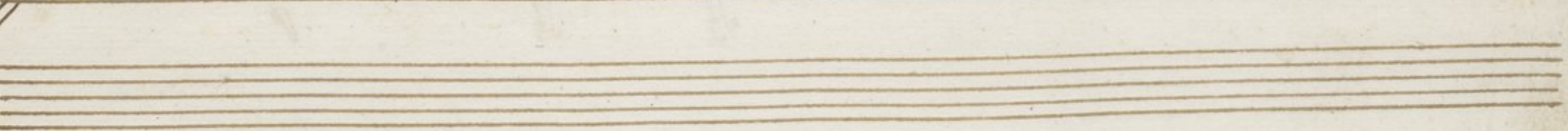
Handwritten musical notation on a single staff. It features a series of notes with slurs and accents, including a half note and several quarter notes.

Handwritten musical notation on a single staff. It features a series of notes with slurs and accents, including a half note and several quarter notes.

*pur soave a vn' alma*

*Dopo si' via procella goder la dolce*

Handwritten musical notation on a single staff. It features a series of notes with slurs and accents, including a half note and several quarter notes.

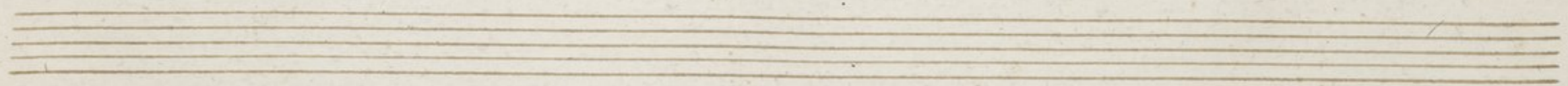


Handwritten musical score for the first system, consisting of five staves. The top two staves appear to be for a keyboard instrument, with notes and rests. The bottom three staves contain more complex rhythmic patterns, including slurs and dynamic markings like 'sf' and 'p'. A 'Vnry:' marking is present above the second staff.

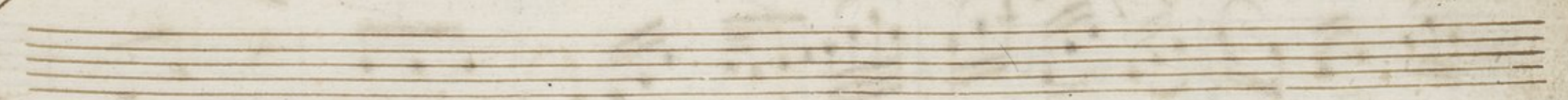
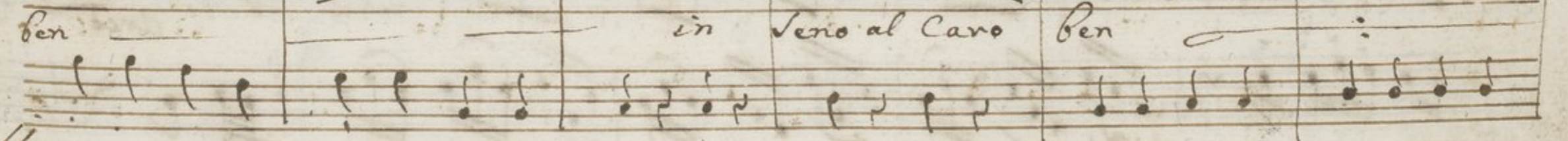
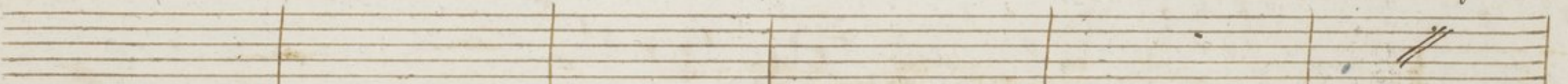
Handwritten musical score for the second system, featuring a vocal line with lyrics and a piano accompaniment. The lyrics are "Calma in seno al Caro ben in seno al Caro ben Doppo si via pro =". The piano part has dynamic markings "sf" and "p".



Doleo calma in seno al caro ben go = der la Doleo calma in seno al caro



Contra 8<sup>va</sup> Sopra



Handwritten musical score for strings and woodwinds. The score consists of six staves. The first two staves appear to be for strings, with various rhythmic patterns and dynamics. The third staff is for woodwinds, with a dynamic marking of *Coll. P.* and a section marked *Contra 8<sup>va</sup> Sopra*. The fourth and fifth staves contain complex woodwind passages with many sixteenth and thirty-second notes. The sixth staff is empty.

Handwritten musical score for voice and piano. The top staff is for voice, with the lyrics "Ben, al Caro Ben" written below it. The bottom staff is for piano accompaniment, featuring a rhythmic pattern of eighth notes. Dynamics include *f* and *ff*.

Segue subito =

= Sinfonia Laguore =

**Corni**  
Flauti

**Oboi**

**Violini**

**Viola**

**Basso**

**Timpani**  
Percussion

**Violoncelli**

**Contrabbassi**

This page of a handwritten musical score consists of approximately 18 staves. The notation includes various rhythmic values, accidentals, and dynamic markings. The score is organized into several systems, with some staves containing rests and others containing active musical notation. The handwriting is in dark ink on aged, slightly yellowed paper.

Key features of the score include:

- Dynamic Markings:** *ff* (fortissimo) and *p* (piano) are used throughout the piece.
- Tempo/Performance Instructions:** The word *Contra* is written on several staves, possibly indicating a specific instrument or performance style.
- Accidentals:** Numerous sharps and naturals are present, particularly in the lower staves.
- Rhythmic Notation:** The score features a variety of note values, including quarter, eighth, and sixteenth notes, as well as rests.



3/3

= Doppo la sinfonia lugubre =

94

Scena Ultima

*Tutti* } *Eur:* ah padre mio.... *Att:* scostati audace. *Eur:* ah sire... *Att:* no' abbastarti in =

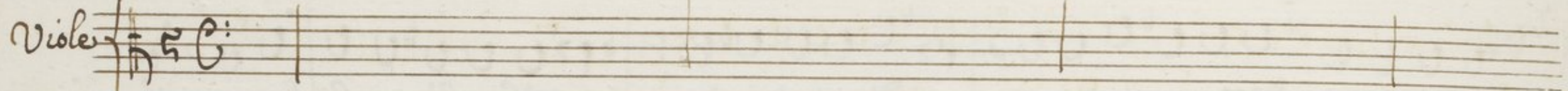
degnò alla viltà delle preghiere. *Eur:* io deggio è vuò morir, no' far chiò varchi almeno, il

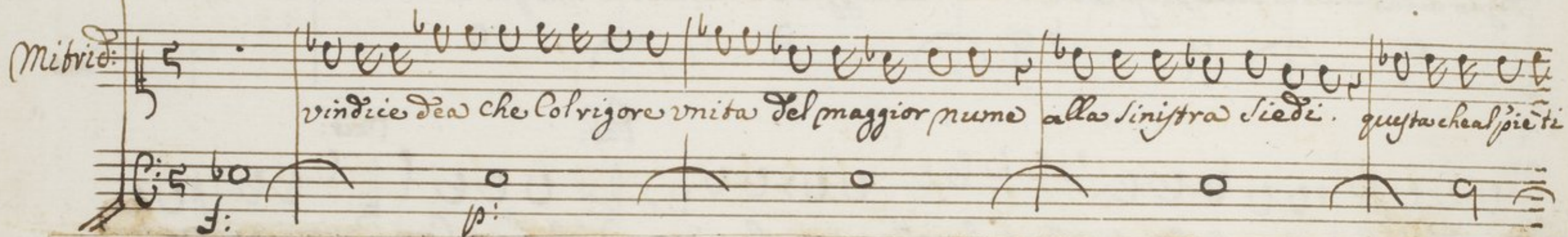
Torbido acheronte & colpa tua con tal rossore in fronte. *Pal:* / che fero Cor. / *Mit:* vieni mia vita.

Oh' nuovo di mania oggetto. *Att:* *Emi:* Eccomi o' caro. *Eur:* oh dei! padre... ma' taci. *Att:* *Mit:* il gran decreto, Cr:

= mai Compir si Dee. ti scosta o' prence. *Eur:* ah sento strapparmi il Cor. / *Emi:* ma' restera' contento. / *Eur:* segue con III

Handwritten musical notation for two staves. The top staff is in treble clef with a key signature of one flat (B-flat) and a common time signature (C). It contains several measures with notes and rests, including dynamic markings such as *f* and *p*. The bottom staff is also in treble clef with a common time signature and contains rests.

Viole 

Mitrio:   
 vindice dea che col rigore unita del maggior nume alla sinistra siedi. questachealpieti

Handwritten musical notation for a section with five staves. The top two staves are in treble clef with a key signature of one flat and a common time signature. The bottom three staves are in bass clef with a key signature of one flat and a common time signature. The section includes dynamic markings such as *f* and *fp*.

vedi. Osta fatal, pronto a svenarti io sono. Degnami di perdono, se ad altro nume

Viola  
coll'Organo

Handwritten musical notation for Viola and Organ accompaniment. The Viola part is on a single staff with notes and rests. The Organ part is on a lower staff with notes and rests. Dynamics include *f p* and *arriv: p*.

il sacrificio or volgo, e dandolo alla pace, a te lo Tolgo.

Segue =

Eur: Pal: *f p* Att: Mit: Att:

Handwritten musical notation for the first vocal line. It includes notes, rests, and dynamic markings. The lyrics are written below the staff.

Stelle! possenti dei! - Che fu? Così punisco i Torti miei. / qual sorpresa!

Eur: Mit:

Handwritten musical notation for the second vocal line. It includes notes, rests, and dynamic markings. The lyrics are written below the staff.

Ove sono! Eccoti il padre; prendilo illustre Esempio di vero Onor, di fili =

Att:

Handwritten musical notation for the third vocal line. It includes notes, rests, and dynamic markings. The lyrics are written below the staff.

=ale affetto; attalo, e che mai pensi? penso signor che de' Trionfi tuoi il Tri =

Eur:

on fo maggiore nō è forse il mio brando, è il mio furor. Ah' quai grazie degg' io....

Mit:

Eur:

Em:

Le devi amico alla Saggia Emirena. Ah lè mie voci appena... nō più, è sermi grato prencuor:

Eur:

vai gl'affetti di palmide Cortese aprova, è la tua destra il pegno sia di tua fe. Prendi palmide.

Pal:

Ell:

oh destra ch'è tanto desia. Barbara è queste, son lè speranze mie? Così mi inganni?

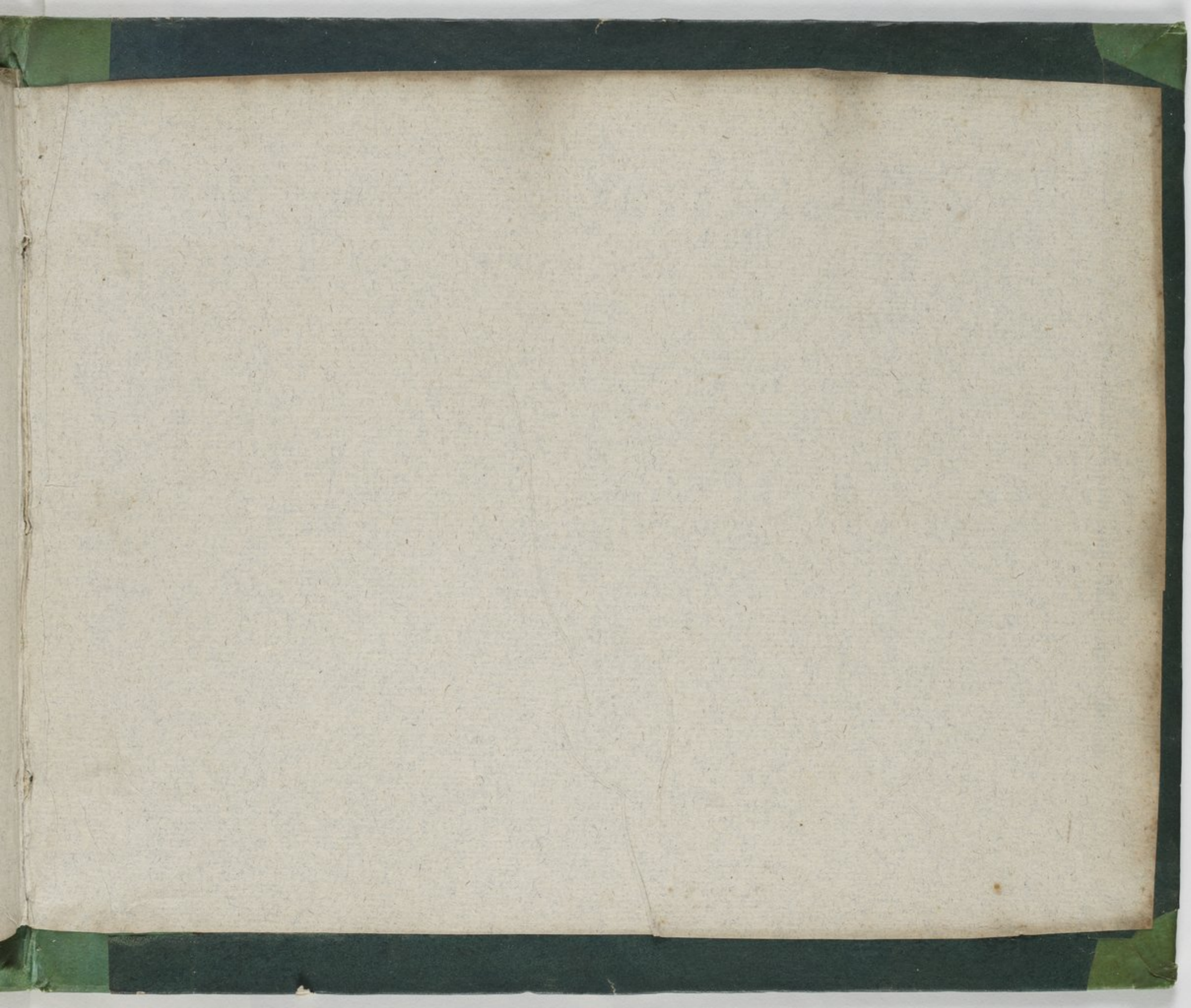
Pal:

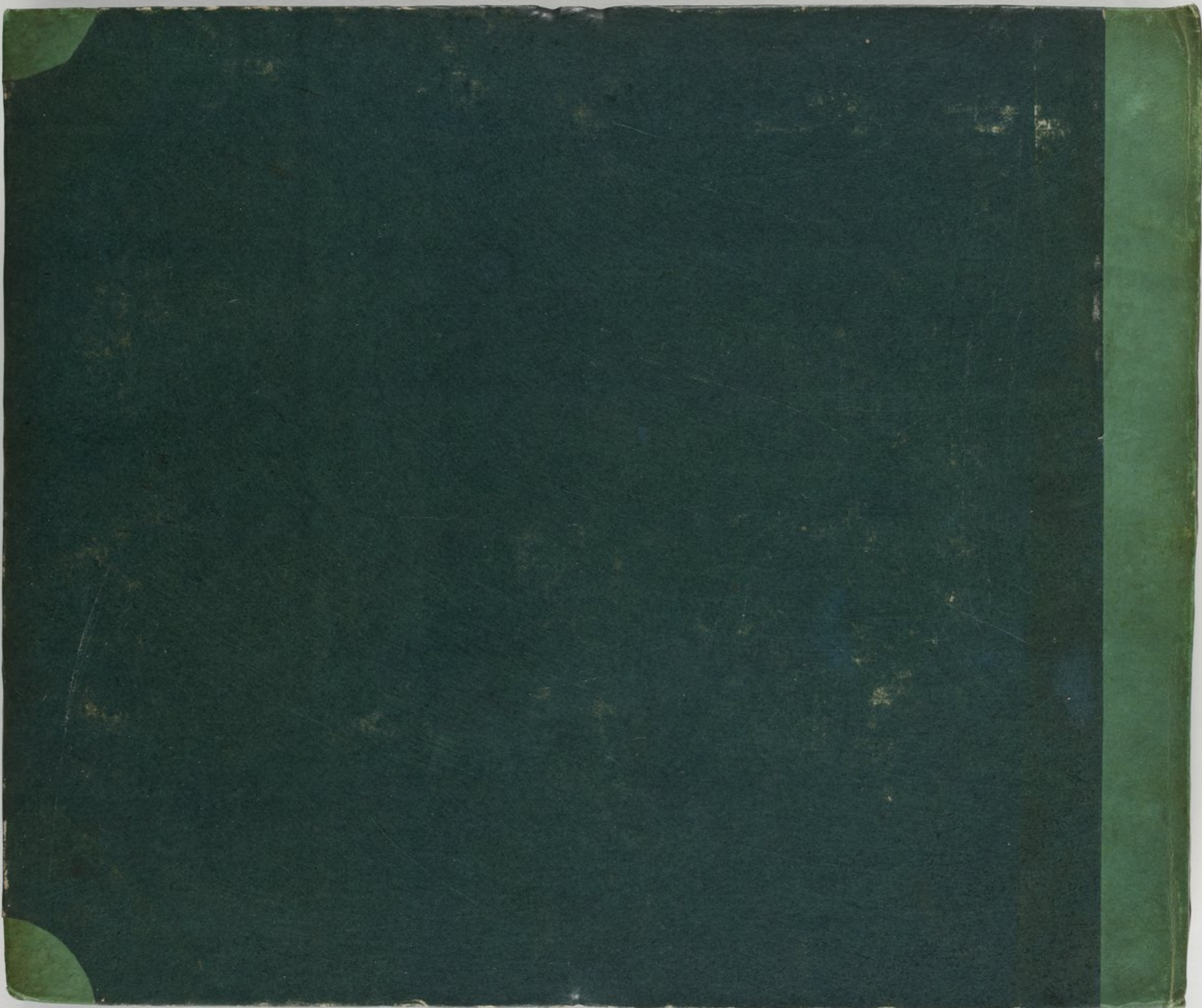
Taci: è tempo di gioie è non d'affanni.













ATTALIO

N. 2 & 3.

ALESSANDRIA

Ab. o.  
159 (2)