

Del sig. Aless. Scarlatti:

Handwritten musical score for the first system. It consists of four staves. The top staff is a vocal line in treble clef with a common time signature. The second and fourth staves are piano accompaniment in bass clef. The third staff contains the lyrics "O De Pastori dilecto" written in a cursive hand. The tempo marking "Andante lento" is written below the second staff.

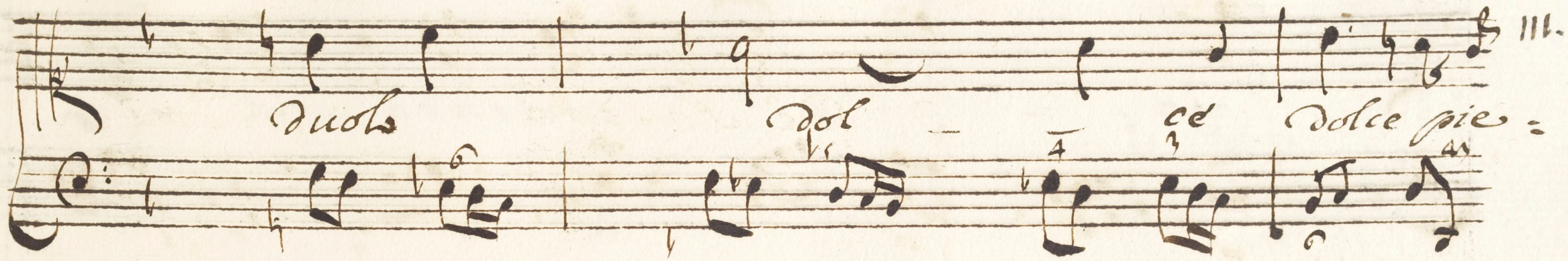
Handwritten musical score for the second system, continuing from the first. It consists of four staves. The top staff is a vocal line in treble clef. The second and fourth staves are piano accompaniment in bass clef. The third staff contains the lyrics "duolo, ni moua i co - ri del mio gran" written in a cursive hand. The tempo marking "Andante" is written below the second staff.



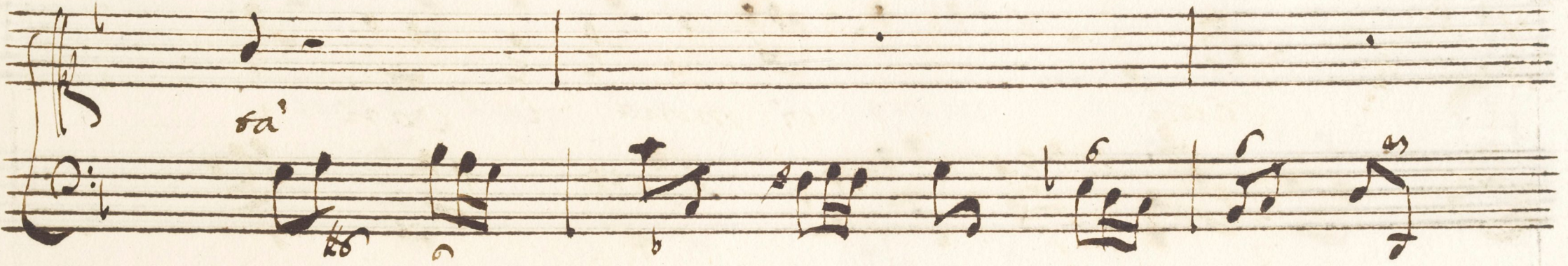
*O de' Pastori dilectos*  
*suscite vi moua i cori*  
*del mio gran duolo dolce pie-*  
*sa vi moua i cori del mio gran*



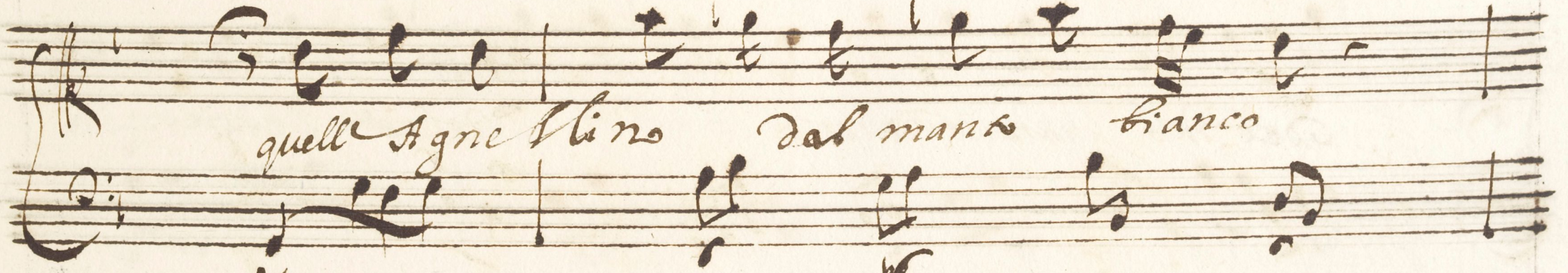
*duolo* *dol* *ce* *dolce pie* = III.



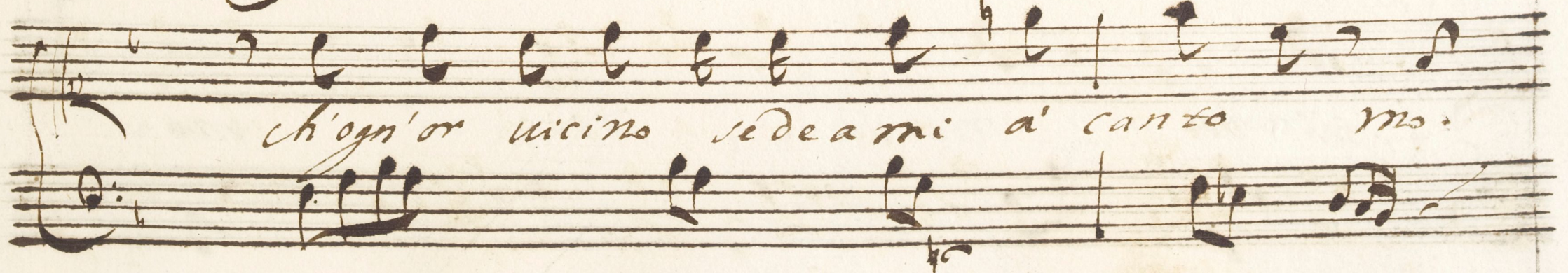
*sa'*



*quell' Agnelino dal manto bianco*



*ch'ogn'or vicino s'edea mi a' canto mo.*





ren - do morendo sta

morendo sta quell' Agnel =

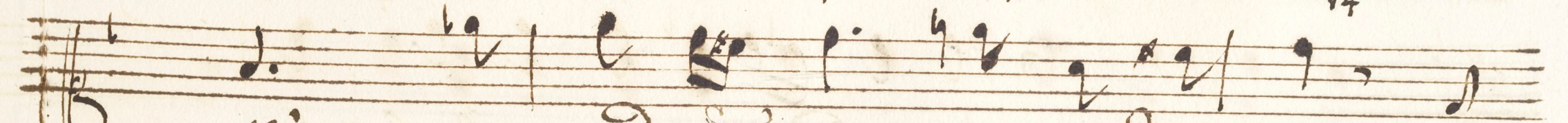
lino dal manto bianco ch'ogn'or vicino sedeam: a

cans moren - do sta mo -





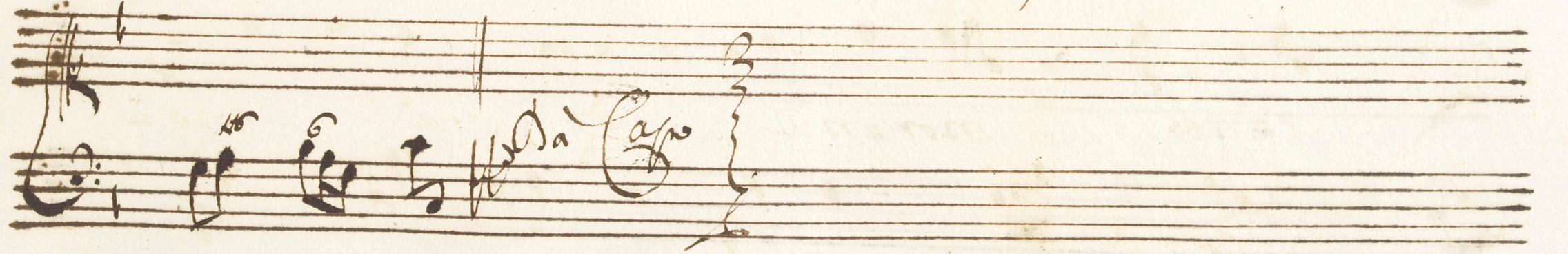
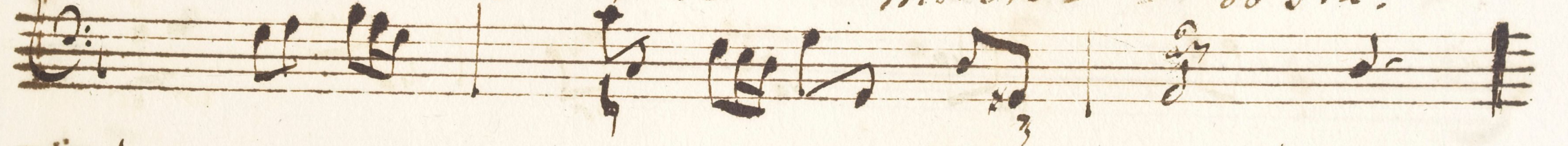
rendo sta' quell' agnellino morendo



sta' morendo morendo sta' mo:



ren - do moren - do sta'



Da Capo



*Rec:* *Nice, Nice mel' die' la*  
*mia leggiadra Dea colla sue man: issepe.*  
*mel' die' quand' ei tenevo ancor suggea*  
*dal sen' materno il Latte. Jo, Jo*



presi di nudrito  
attenta cura, e

quando apparue il nuovo maggio in terra

nella scemare al mansueti A:

gnello sovra il tergo lanoso il graue incarco



del suo candido uello, canta parve la:

sciai dal ferro illersa, quanto ridir po:

tesse ne i rileua ti Spazi

quelle lettere istesse, onde si dice, il bel'



nome di Nice.

*Aria*  $\frac{12}{8}$   
*andante*

*In'*

sua natura selua *in*



sua nativa selua crescendo all'or la

belua, crescen - - - - - ua cre:

scua il nome ancor - - - - - cresceua il nome an:

cor. in sua nativa



selua, crescendo all'or la belua cresce -

ua cresceua il nome ancor cre:

sce - - - ua cresce -

ua cresceua il nome ancor cre:



*Scena il nome ancor.*

*e*

*nel veder' ch'io fea la Belua, mi parca mi pa-*

*rea di veder Ni - - ce di veder Nice ogn'*



or mi pareo di ueder Ni = ce di

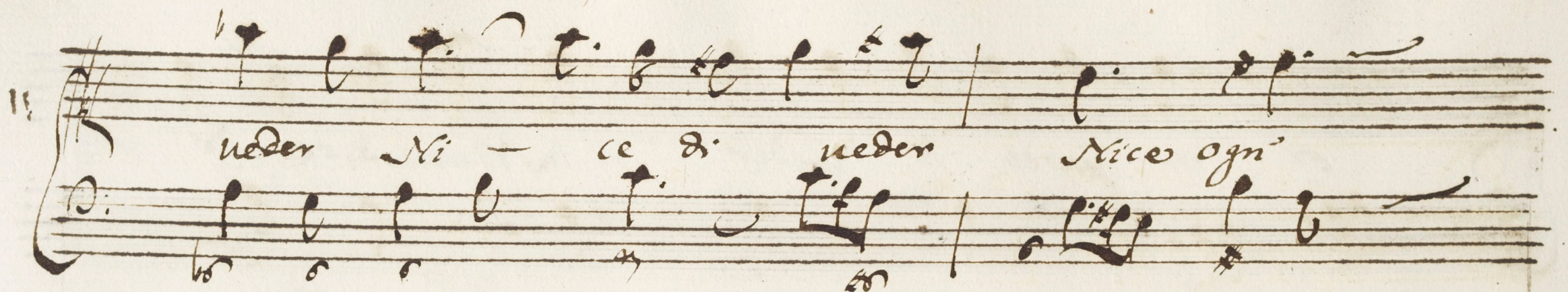
ueder nice ogn' or'

nel ueder d'io feo la bella mi pareo mi pa:

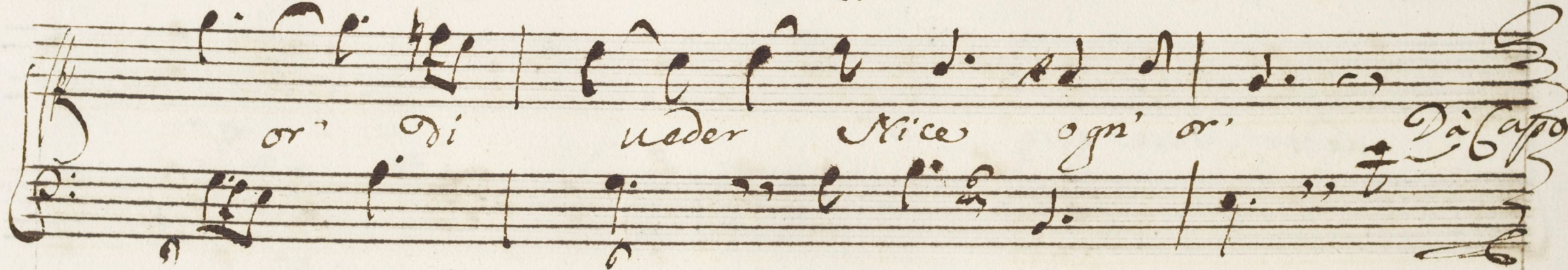
rea di ueder Ni = ce di ueder nice ogn' or' di



11

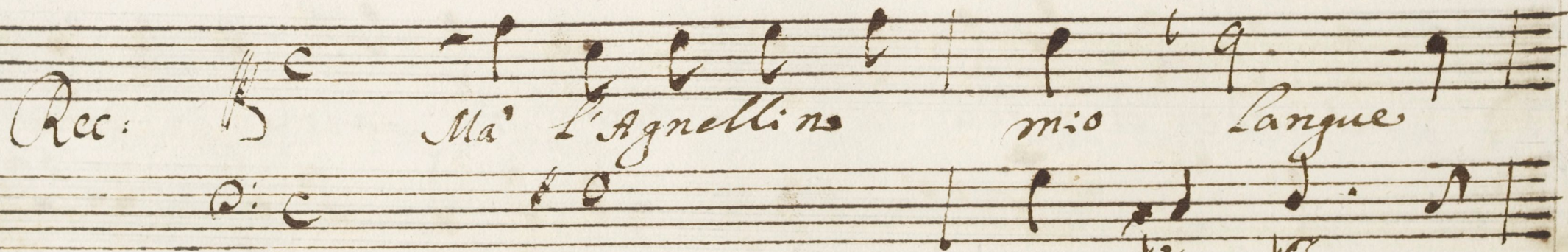


ueder Ni - ce di ueder Nice ogn'

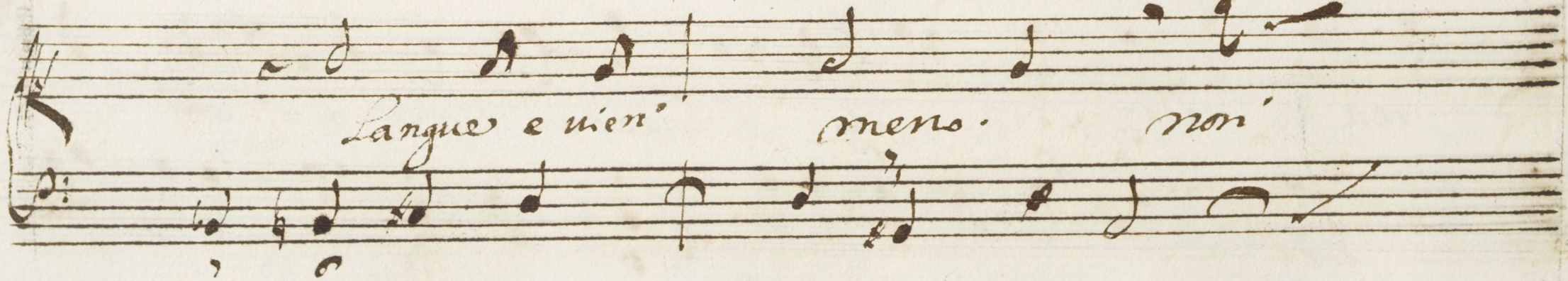


or' di ueder Nice ogn' or'

Rec: *Ma' l'Agnellino mio Langue*



*Langue e vien' meno. non'*



*Da Capo*



Sò, non sò se per ueleno, in qualche fronda a =

soto, o per fascino spinto a mor

- ce sia. Deh deh' uaga Nice

mia concedi a me perdono s'io



11

fui poco geloso, l'onore in casto:

dir del tuo bel dono.

Aria

Andante



Morte *cruda*

Morte *cruda* il dardo ha

*Stretto* cono il povero povero

*Stretto* tank ar:



Handwritten musical notation on a five-line staff. The vocal line consists of several notes, including a half note and a quarter note. The piano accompaniment features a bass line with a 45 fingering and a treble line with a 44 fingering.

*disce, e non so' come e non so' co =*

Handwritten musical notation for the piano accompaniment, showing a bass line with a 45 fingering and a treble line with a 44 fingering.

Handwritten musical notation on a five-line staff. The vocal line has a few notes, and the piano accompaniment continues with bass and treble lines.

*me morbo*

Handwritten musical notation for the piano accompaniment, showing a bass line with a 45 fingering and a treble line with a 44 fingering.

Handwritten musical notation on a five-line staff. The vocal line includes notes with a 44 fingering. The piano accompaniment features a bass line with a 45 fingering and a treble line with a 44 fingering.

*cruda il dardo E' stretto con la il*

Handwritten musical notation for the piano accompaniment, showing a bass line with a 45 fingering and a treble line with a 44 fingering.

Handwritten musical notation for the piano accompaniment, showing a bass line with a 45 fingering and a treble line with a 44 fingering.

*pouero Agni detto tanto ar:*

Handwritten musical notation for the piano accompaniment, showing a bass line with a 45 fingering and a treble line with a 44 fingering.

Handwritten musical notation for the piano accompaniment, showing a bass line with a 45 fingering and a treble line with a 44 fingering.



disce tanto ardisce e non so' come

e non e non so' co = me

tanto tanto ardisce e non so'

come e non so' co = me e non



*e non so' co = mes.*

*ch'io mia bella non cred ei*

*ch'io mia*

*Bella non cred ei che po se fe.*



*l'empria* *dea* *cancellare*

*il no bel no = me cancellare*

*il no bel nome il no bel no =*

*me' d'io mia bella non cre =*



132

*i, che potesse l'empia dea cancella -*

The first system of handwritten musical notation consists of two staves. The upper staff is a vocal line in treble clef with a key signature of one flat (B-flat) and a common time signature. It contains the lyrics "i, che potesse l'empia dea cancella -". The lower staff is a bass line in bass clef, providing harmonic support for the vocal line.

*- re il suo bel No - me -*

*Da Capo*

The second system of handwritten musical notation also consists of two staves. The upper staff is a vocal line in treble clef, continuing the lyrics "- re il suo bel No - me -". The lower staff is a bass line in bass clef. The system concludes with a double bar line and the instruction "Da Capo" written above the staff.

A series of ten empty musical staves, arranged in two groups of five, occupying the lower half of the page. These staves are not filled with any musical notation.



5





