

Del S.^o Lotti

Non tar: dar di ue:
= nir a' chi s'ama -

The image shows a handwritten musical score on aged paper. It consists of two systems of music. Each system has a vocal line (top staff) and a piano accompaniment line (bottom staff). The vocal lines contain lyrics in Italian. The first system's lyrics are "Non tar: dar di ue:" and the second system's lyrics are "= nir a' chi s'ama -". The piano accompaniment lines feature chords and melodic lines. The paper shows signs of age, including foxing and some faint, illegible markings on the left side.

dolce a = mata Lene: lo: pe bella

The first system of handwritten musical notation consists of two staves. The upper staff is a vocal line in treble clef with a key signature of one flat (B-flat) and a common time signature (C). It contains a melodic line with various note values and rests. The lower staff is a basso continuo line in bass clef with a common time signature (C), featuring a simple harmonic accompaniment of quarter and half notes.

non far = far si venir a chi t'ama dolce a =

The second system of handwritten musical notation also consists of two staves. The upper staff is a vocal line in treble clef with a key signature of one flat (B-flat) and a common time signature (C). It continues the melodic line from the first system. The lower staff is a basso continuo line in bass clef with a common time signature (C), providing harmonic support with quarter and half notes.

Handwritten musical notation for the first system. The top staff is a vocal line with lyrics: "amata Le: ne lope bella, non tar: dar di ue:". The bottom staff is a basso continuo line. The music is in a 6/8 time signature with a key signature of one flat (B-flat).

Handwritten musical notation for the second system. The top staff is a vocal line with lyrics: "nir a chi t'ama - Golee amata Le:". The bottom staff is a basso continuo line. The music continues in the same 6/8 time signature and one-flat key signature.

= ne loye bella non far = dar di venir a chi

The first system of handwritten musical notation consists of two staves. The upper staff is a vocal line with a treble clef and a key signature of one flat (B-flat). It contains four measures of music with lyrics written below it. The lower staff is a bass line with a bass clef and a key signature of one flat, containing four measures of music. The lyrics are written in a cursive hand and are: "= ne loye bella non far = dar di venir a chi".

t'ama - dolce a = mata bene = loye

The second system of handwritten musical notation also consists of two staves. The upper staff is a vocal line with a treble clef and a key signature of one flat, containing four measures of music with lyrics written below it. The lower staff is a bass line with a bass clef and a key signature of one flat, containing four measures of music. The lyrics are written in a cursive hand and are: "t'ama - dolce a = mata bene = loye".

bella, fa che

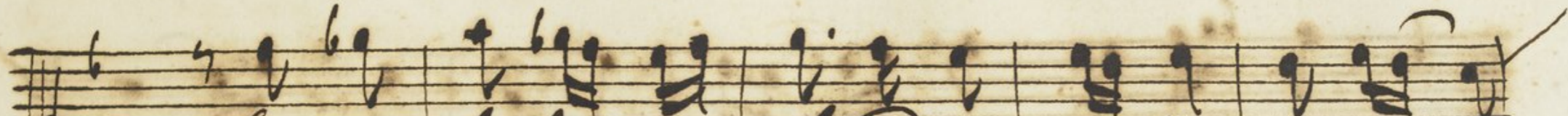
veggia chi tanto ti brama

fa che - ueggia chi tanto si

The first system of handwritten musical notation consists of two staves. The upper staff is a vocal line with a treble clef and a key signature of one sharp (F#). It contains a melodic line with various note values and rests. The lower staff is a piano accompaniment line with a bass clef and a key signature of one sharp. It features a bass line with chords and single notes. The lyrics 'fa che - ueggia chi tanto si' are written in cursive between the two staves, with a hyphen under 'ueggia'.

brama l'una e l'altra tua lucida stella

The second system of handwritten musical notation also consists of two staves. The upper staff is a vocal line with a treble clef and a key signature of one sharp. It continues the melodic line from the first system. The lower staff is a piano accompaniment line with a bass clef and a key signature of one sharp. It continues the bass line. The lyrics 'brama l'una e l'altra tua lucida stella' are written in cursive between the two staves.



L'una e' l'altra tua lucida stella, non far:



= dar di venir a' chi t'ama - dolce a = -



67

Fin = *meta* *Re* = *nelo* = *pe* *bella* *non* *vir* =

The first system of handwritten musical notation consists of two staves. The upper staff is a vocal line in treble clef with a key signature of one flat (B-flat) and a common time signature (C). It contains a melodic line with various note values, including eighth and sixteenth notes, and rests. The lower staff is a basso continuo line in bass clef, providing harmonic support with a series of notes and rests. The lyrics are written in a cursive hand between the two staves.

= *dar* *di* *venir* *a* *chi* *t'ama* — *Dolce* *a* =

= *meta*

The second system of handwritten musical notation also consists of two staves. The upper staff is a vocal line in treble clef with a key signature of one flat and a common time signature. The lower staff is a basso continuo line in bass clef. The lyrics continue from the first system. The piece concludes with a double bar line and a fermata over the final note of the vocal line, followed by the word "meta" written below the staff.

Handwritten musical notation for the first system. The top staff is a vocal line with a treble clef and a key signature of one flat (B-flat). The lyrics are written below the staff. The bottom staff is a basso continuo line with a bass clef and a key signature of one flat. The lyrics are written above the staff.

= mata Pe: ne lope bella, non far = - -

Handwritten musical notation for the second system. The top staff is a vocal line with a treble clef and a key signature of one flat. The lyrics are written below the staff. The bottom staff is a basso continuo line with a bass clef and a key signature of one flat. The lyrics are written above the staff.

= dar di ue: nir a' chi t'ama - dolce a = -

= maba Pe: nelope bella, non far: dar di ue:

The first system of the handwritten musical score consists of two staves. The upper staff is a vocal line in a treble clef with a key signature of one flat (B-flat). It contains eight measures of music, including a melisma with a slur and a fermata over the notes 'a' and 'b'. The lower staff is a basso continuo line in a bass clef, providing harmonic support with a series of notes and rests.

= nir a chi s'ama - dolce a: maba Pe:

The second system of the handwritten musical score also consists of two staves. The upper staff is a vocal line in a treble clef with a key signature of one flat. It contains eight measures of music, including a melisma with a slur and a fermata over the notes 'a' and 'b'. The lower staff is a basso continuo line in a bass clef, providing harmonic support with a series of notes and rests.

= ne lope bella. -